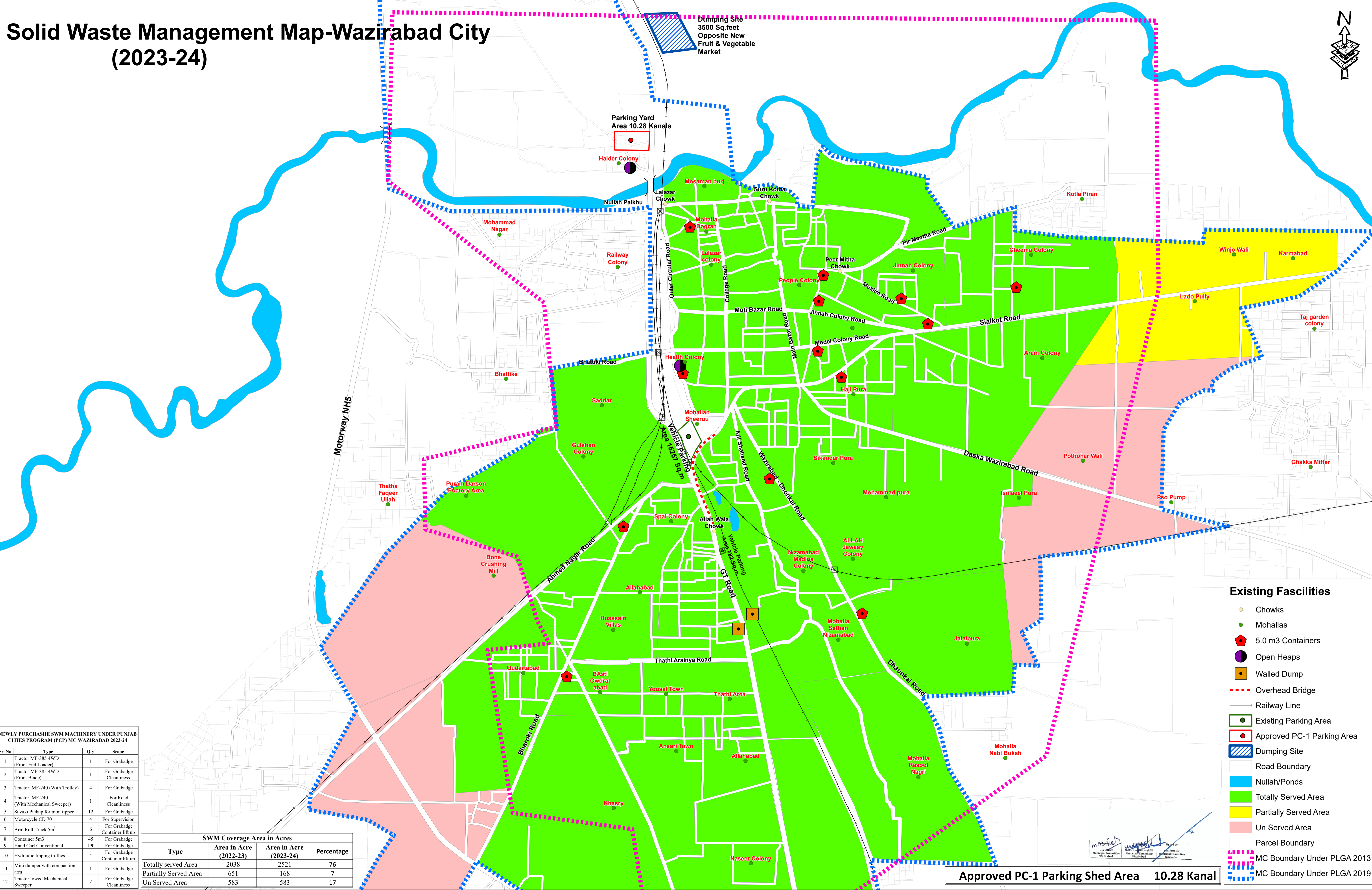


Solid Waste Management Map-Wazirabad City (2023-24)



Existing Facilities

- Chowks
- Mohallas
- ⬠ 5.0 m3 Containers
- Open Heaps
- Walled Dump
- - - Overhead Bridge
- Railway Line
- Existing Parking Area
- Approved PC-1 Parking Area
- ▨ Dumping Site
- Road Boundary
- Nullah/Ponds
- Totally Served Area
- Partially Served Area
- Un Served Area
- Parcel Boundary
- - - MC Boundary Under PLGA 2013
- - - MC Boundary Under PLGA 2019

NEWLY PURCHASED SWM MACHINERY UNDER PUNJAB CITIES PROGRAM (PCP) MC WAZIRABAD 2023-24

Sr.No	Type	Qty	Scope
1	Tractor MF-385 4WD (Front End Loader)	1	For Grabadge
2	Tractor MF-385 4WD (Front Blade)	1	For Grabadge Cleanliness
3	Tractor MF-240 (With Trolley)	4	For Grabadge
4	Tractor MF-240 (With Mechanical Sweeper)	1	For Road Cleanliness
5	Suzuki Pickup for mini tipper	12	For Grabadge
6	Motorcycle CD 70	4	For Supervision
7	Arm Roll Truck 5m ³	6	For Grabadge Container lift up
8	Container 5m ³	45	For Grabadge
9	Hand Cart Conventional	190	For Grabadge
10	Hydraulic tipping trolleys	4	For Grabadge Container lift up
11	Mini dumper with compaction arm	1	For Grabadge
12	Tractor towed Mechanical Sweeper	2	For Grabadge Cleanliness

SWM Coverage Area in Acres

Type	Area in Acre (2022-23)	Area in Acre (2023-24)	Percentage
Totally served Area	2038	2521	76
Partially Served Area	651	168	7
Un Served Area	583	583	17

Approved PC-1 Parking Shed Area 10.28 Kanal

PUNJAB MUNICIPAL DEVELOPEMENT FUND COMPANY

PROJECT:
PUNJAB CITIES PROGRAM (PCP)

Map Code
0412050424

Map Version
1.5

DISCLAIMER:
INFORMATION PROVIDED BY MC, PHED & OTHER SOURCES.

Scale: 1:9,000

Date
April 2024